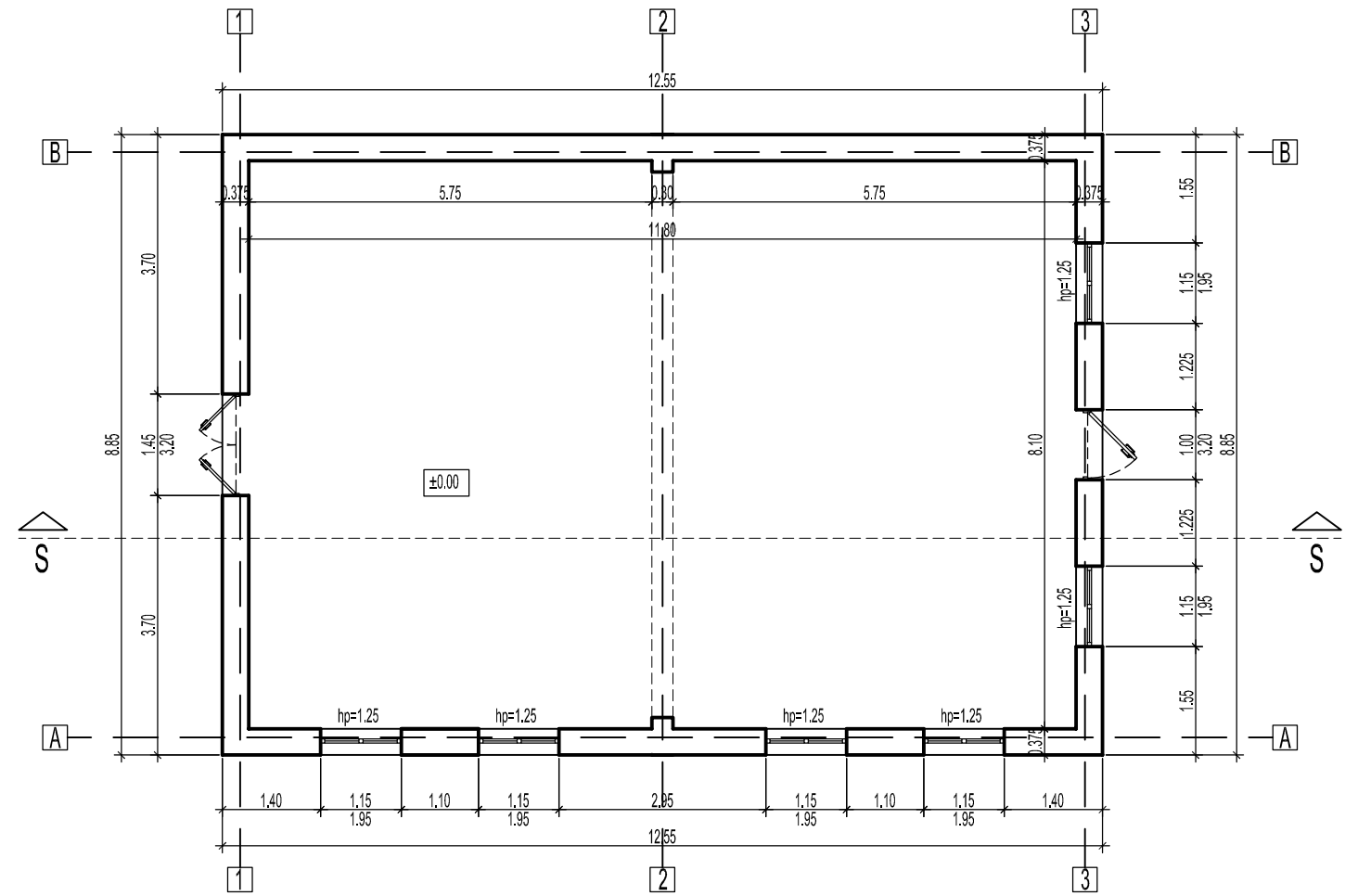
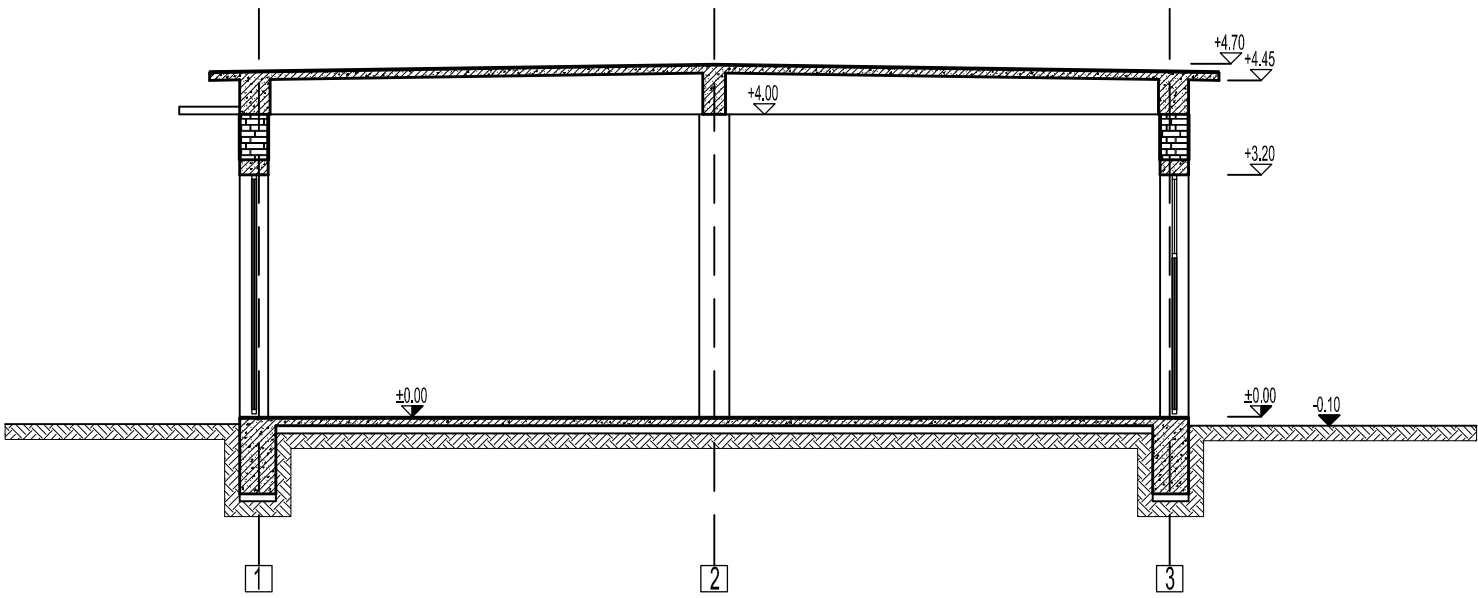


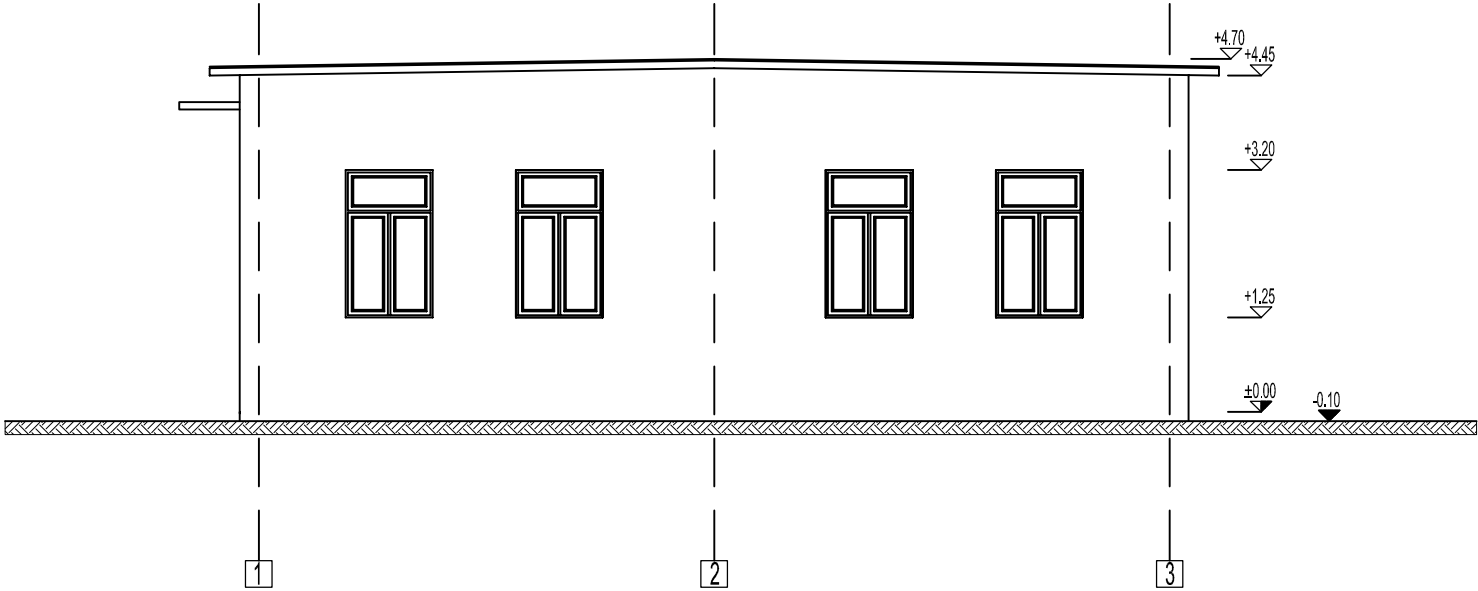
ACEST DOCUMENT ESTE PROPRIETATEA SOCIETATII ELLIS'92 S.R.L. - PLOIESTI. IN CONSECINTA, FIRMA ARE DREPTUL EXCLUSIV DE FOLOSIRE A DESENULUI SAU DE OPERARE A EVENTUALELOR MODIFICARI DIN CAMPIUL ACESTUIA.



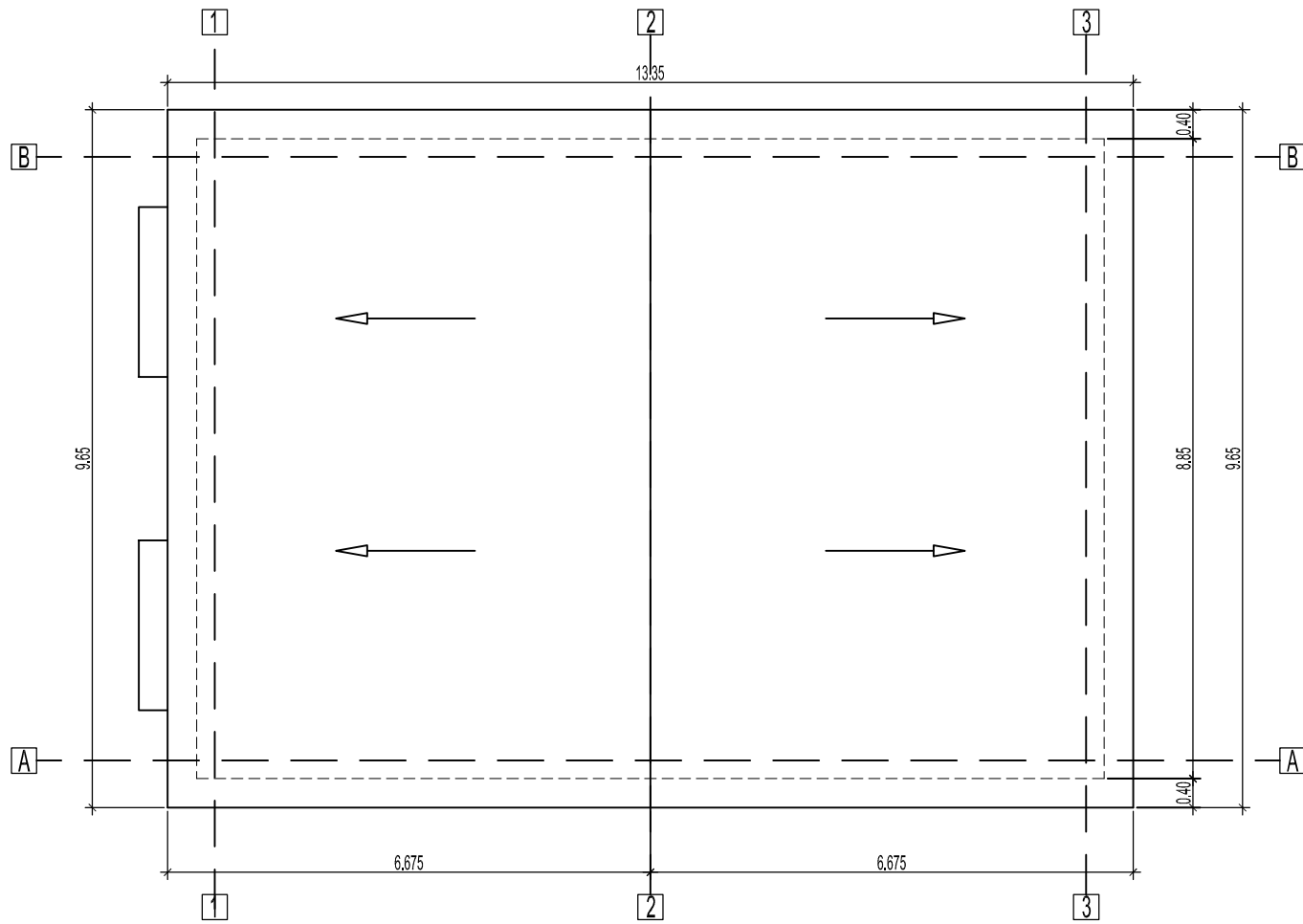
CLADIRE CONEXIUNI 6 KV - PLAN ±0.00 - relevu



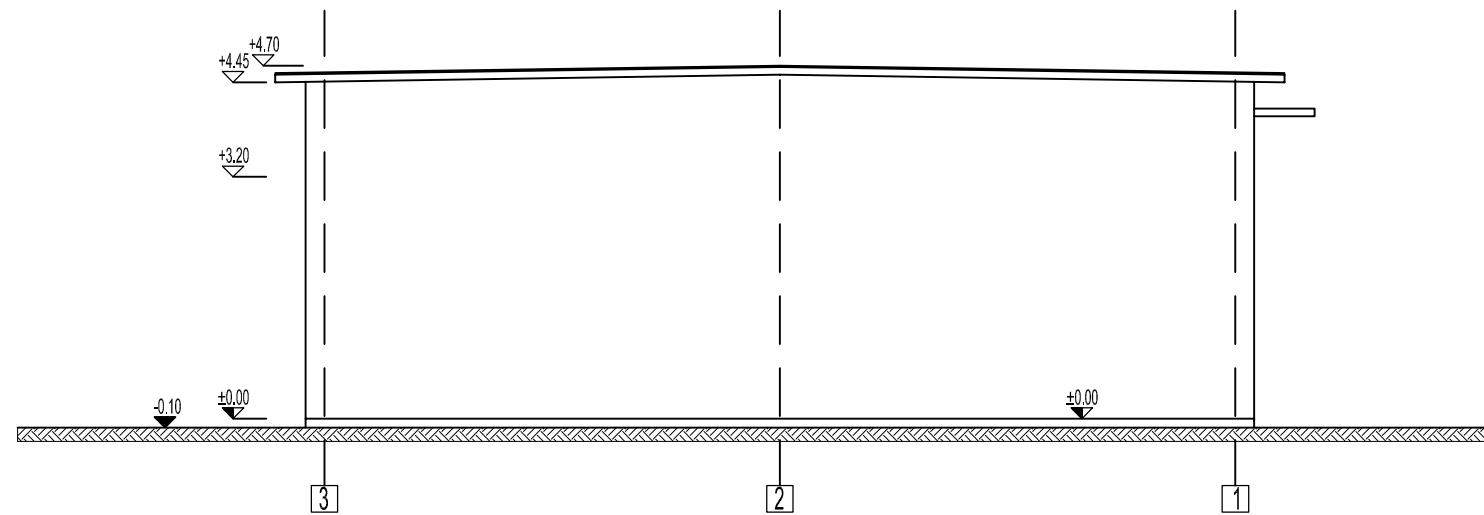
CLADIRE CONEXIUNI 6 KV - SECTIUNE- relevu



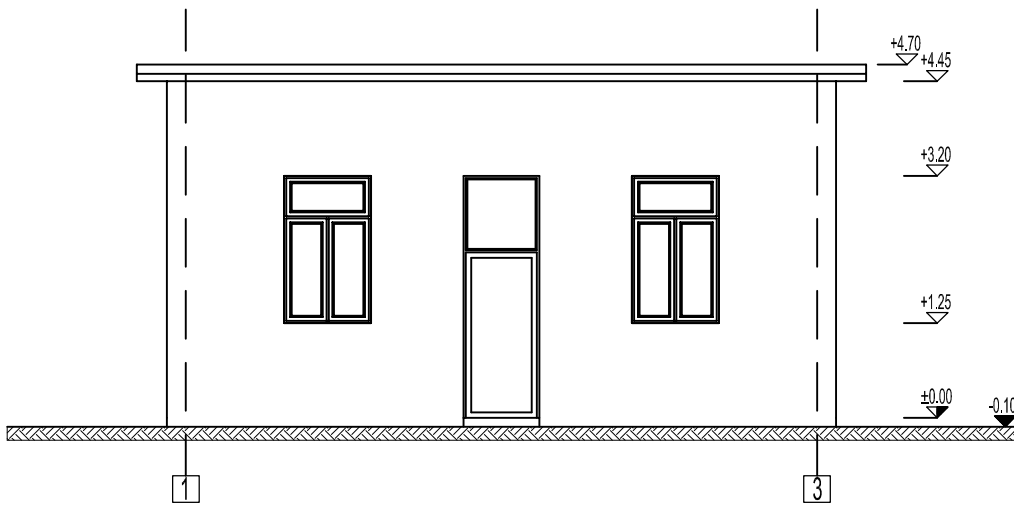
CLADIRE CONEXIUNI 6 KV - FATADA LATERALA STANGA - relevu



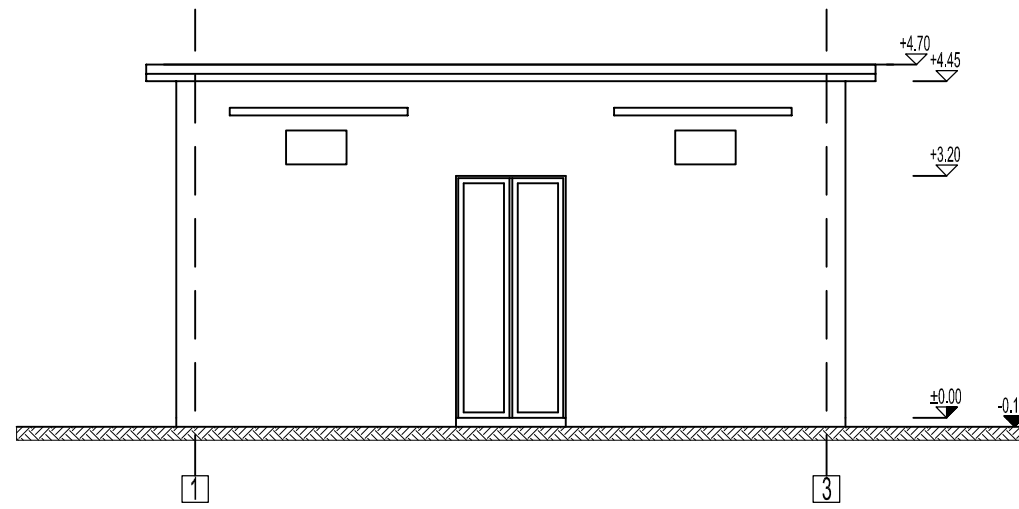
CLADIRE CONEXIUNI 6 KV - ACOPERIS - relevu



CLADIRE CONEXIUNI 6 KV - FATADA LATERALA DREAPTA - relevu



CLADIRE CONEXIUNI 6 KV - FATADA ACCES - relevu



CLADIRE CONEXIUNI 6 KV - FATADA POSTERIOARA - relevu

3				6							
2				5							
1				4							
Rev.	Descriere		Data	Semnat	Rev.	Descriere		Data	Semnat		
Acest document este proprietatea S.C. ELLIS'92 S.R.L. si nu va fi comunicat fara autorizare											
Intocmit		Verificat	Aprobat	Beneficiar			Denumire proiect				
S.Ionescu		A.Ionescu	A.Ionescu	S.C. CONPET S.A.			Reabilitare cladiri Conpet Statia de pompare Calareti				
<div>92 ELIS</div> <div>arhitectura proiectare inginerie consultanta tehnica</div>		<div>SR AC</div> <div>ISO 9001</div> <div>CELESTIAL CONCEPT</div>		CLADIRE CONEXIUNI 6 KV (relevu)				Nr.: A713-A4.1		REV.1	
								Scara: 1:100			
				PLAN PARTER; SECTIUNE; PLAN ACOPERIS; FATADE				Index: A713-A-BD			
								Material:		Masa:	
						Data: 08.2022		Plansa: 1/1			